



Trabajos de Egiptología

Estudio... de la tumba 22... templo de Millones de Años de Tutmosis III

Javier MARTÍNEZ BABÓN

Elementos arquitectónicos de la capilla... Sarenput II... Caracterización geoquímica

Juan Antonio MARTÍNEZ HERMOSO, María José AYORA CAÑADA, Ana DOMÍNGUEZ VIDAL

Tueris-Oxirrinco. La diosa protectora de Per-Medyed

Maite MASCORT ROCA, Esther PONS MELLADO

Restauración... de estelas de falsa puerta... en Heracleópolis Magna...

María Antonia MORENO CIFUENTES

La explotación de esmeraldas en el Egipto romano... *Sikait Project*

Joan OLLER GUZMÁN, David FERNÁNDEZ ABELLA, Vanesa TREVÍN PITA, Oriol ACHÓN CASAS

C2 Project. The Royal Cache Wadi Survey. 2017 Season

José Ramón PÉREZ-ACCINO, Hisham EL-LEITHY

El templo de Heryshef en Heracleópolis Magna...Trabajos en 2018

M. Carmen PÉREZ-DIE, Antonio GÓMEZ LAGUNA

Análisis técnico de telas con textos y marcas de propietario... Dra Abu el-Naga

Pía RODRÍGUEZ FRADE

Modelado... de la tumba de Khunes (QH34h) en Qubbet el-Hawa...

M.ª Paz SÁEZ-PÉREZ, Luisa María GARCÍA RUIZ

Estudio... de la necrópolis de la Dinastía XI... Millones de Años de Tutmosis III

Myriam SECO ÁLVAREZ

Documentación arqueológica tridimensional... Qubbet el-Hawa...

Libertad SERRANO LARA, Luisa María GARCÍA GONZÁLEZ

Un análisis comparativo de los grafitis... *Royal Cache Wadi Survey*

Inmaculada VIVAS SAINZ

102019

Trabajos de Egiptología



Trabajos de Egiptología

Papers on Ancient Egypt

¿Atrapando el solsticio?... orientación de los templos de Deir el-Bahari

Juan Antonio BELMONTE, Magdi FEKRI, Miquel SERRA

Textos e imágenes sobre textiles... tumba UE 1018 en Dra Abu el-Naga

Francisco L. BORREGO GALLARDO

Reflexiones sobre la presencia egipcia en el Levante... a propósito de Tel Erani

Marcelo CAMPAGNO

Algunas... el programa decorativo... Millones de Años de Tutmosis III

Linda CHAPON

***Seis paddle dolls...* del Reino Medio... en Dra Abu el-Naga**

Gudelia GARCÍA FERNÁNDEZ

Estudio de las reutilizaciones de los espacios funerarios...

David GARCÍA GONZÁLEZ

Análisis... de dos momias de la Dinastía XXII... en Dra Abu el-Naga...

Jesús HERRERÍN, Francisco L. BORREGO GALLARDO

El... Millones de Años de Thutmosis III... análisis paleopatológico

Albert ISIDRO

Djehutynefer: el redescubrimiento... de su tumba en el urbanismo tebano

Ángeles JIMÉNEZ-HIGUERAS

Cerámicas cubiertas de barro... en la tumba QH33... Qubbet el-Hawa...

María J. LÓPEZ-GRANDE

El Edificio B de Tell el-Ghaba... dinámica de la unidad doméstica...

Silvia LUPO, Eva A. CALOMINO, Agustina SCARO



Centros de Estudios Africanos
Universidad de La Laguna



ISSN 1695-4750



9 771695 475008



número 10
2019

C2 Project. The Royal Cache Wadi Survey. 2017 Season

José Ramón PÉREZ-ACCINO, Hisham EL-LEITHY

Since the discovery of the royal mummies in 1881, and in accordance with the conclusions of the Lansing campaign in 1920, the Royal Cache Wadi (or C2 Valley) on the West Bank at Luxor has been assumed to be archaeologically deserted. Since 2017, the *C2 Project* of Universidad Complutense of Madrid has returned to the site in order to explore the valley as a whole, not as though it were defined exclusively by the cache tomb TT 320. The results of the Project's research to date challenge the interpretation of the Wadi either as archaeologically deserted or exclusively as an ancient hiding place, insofar as evidence of human activity indicates that other elements of the valley were significant in antiquity.

C2 Project. The Royal Cache Wadi Survey. *Campaña 2017*

Desde el descubrimiento de las momias reales en 1881, y siguiendo las conclusiones de la campaña de Lansing en 1920, se ha asumido que el Royal Cache Wadi (o Valle C2) en Luxor está arqueológicamente desierto. Desde 2017, el Proyecto C2 de la Universidad Complutense de Madrid ha regresado al lugar para explorar el valle en su conjunto, no como un paraje definido exclusivamente por la tumba TT 320, la *cachette*. Los resultados de la investigación del Proyecto C2 hasta la fecha ponen en duda esta interpretación del lugar como arqueológicamente desierto o exclusivamente como un antiguo escondite, dado que la evidencia de actividad humana indica que otros aspectos del valle fueron significativos en la antigüedad.

Keywords: Royal mummies, Theban necropolis, landscape, graffiti.

Palabras claves: Momias reales, necrópolis tebana, paisaje, grafiti.

Scenes of important events are often diminished in proportion to the importance of what happened there. In 1881, the mummies of a large number of kings were discovered in a tomb (TT 320) near the bottom of a small rocky valley or bay, immediately south of Deir el-Bahari on the West Bank at Luxor—accordingly, a central area in the spatial organisation of the Theban necropolis. The reasons for transferring royal bodies to this place from their original tombs could have been multiple and several possibilities have been mooted, most of which focus on a presumed intention

to hide the bodies of the monarchs to protect them from looting. This spectacular discovery, known since 1881 simply as the Royal Cache, seemed to be the definitive feature of a site now often known simply as the Royal Cache Wadi, and has focused the interest of researchers ever since. In the very first report of the discovery, Gaston Maspero stated that “jamais cachette ne fut mieux dissimulée”,¹ and this interpretation has discouraged further analysis of the valley itself by apparently precluding the prospect of other significant human activity in an area which functioned as a ‘hiding place’.

¹ Maspero 1881-1887: 7.

TdE 10 (2019) - Páginas: 305 - 314

Recepción: 17/10/2019 - Admisión: 20/12/2019

José Ramón Pérez-Accino — jrpaccino@ucm.es

Departamento de Prehistoria, Historia Antigua y Arqueología / Facultad de Geografía e Historia / Universidad Complutense de Madrid / España

Hisham El-Leithy — hleithy@aucegypt.edu

Centre for Documentation of Ancient Egypt / Ministry of Antiquities / Egypt

<http://doi.org/10.25145/j.TdE.2019.10.17>

Because the Royal Cache Wadi—or C2 Valley according to the nomenclature used in the *Graffiti de la Montagne Thebaine (GMT)*²—has otherwise been considered archaeologically deserted, the subsequent interest of researchers has focused on matters immediately related to tomb TT 320. In January 1920, Ambrose Lansing did explore the possible existence of other significant structures or elements in the valley and the outcome was negative, though the site was said to have been explored “yard by yard”.³ Graffiti in the valley have been surveyed several times as part of the complete survey of graffiti on the West Bank: initially Wilhelm Spiegelberg⁴ published his results from a survey mostly made in the winter of 1895-96;⁵ and most recently the *Centre de Documentation et d'Étude sur l'Ancienne Égypte (CEDAE)* published *Graffiti de la Montagne Thebaine*.⁶ Nevertheless, a more recent project to re-explore and map tomb TT 320 left aside any consideration of the valley as its context.⁷ In the light of these previous investigations of this central area in the Theban necropolis, the question arises whether the so-called Royal Cache Wadi is indeed a vacant space suited for a hiding place or whether, on the contrary, there are indications of human activity which may suggest a different original context for using the tomb as a cache. Of course, the presence of graffiti itself may be at odds with the interpretation of the site as archaeologically deserted. So, the study presented here focuses on the geographical environment of the C2 Valley as context, rather than on the content discovered in 1881, and the possibility of identifying other activities and other

elements in the valley, thereby better contextualizing the reasons for the transfer of the kings' bodies to this site.

C2 Project. The Royal Cache Wadi Survey

Whereas little attention has been paid to the geographical environment of the small, rocky C2 Valley, since 2017 Universidad Complutense of Madrid, in collaboration with the Centre for Study and Documentation of Egyptian Antiquities of the Egyptian Ministry of Antiquities, has been conducting the *C2 Project. Royal Cache Wadi Survey*, under the joint direction of José R. Pérez-Accino and Hisham Elleithy. Prior to beginning our work, members of the team in informal visits had identified a number of elements which had not been recorded previously, such as rock formations with apparent traces of human intervention and chiselling, and unrecorded graffiti. Before arriving on site, the team had already compiled a corpus of known graffiti in the valley from the published information. These records have been the basis of work in the field, allowing us to check the position and current state of preservation of the recorded graffiti. Spiegelberg identified a particular coherent group of graffiti in the upper ground of the valley in the cliff walls towards the west, which he dated to the Middle Kingdom. Unfortunately, access to these graffiti is now unsafe so we have decided to document these graffiti in future campaigns with a proper access plan and safety measures in place. Consequently, during the

² Černý, Desroches Noblecourt and Kurz 1969-1970; Černý *et alii* 1971; Coque *et alii* 1972 and 1973.

³ Winlock 1920.

⁴ Spiegelberg 1921.

⁵ Peden 2001: 30.

⁶ See: Spiegelberg 1921; Černý 1956; Sadek and Shimy 1974.

⁷ Graefe and Belova 2010.

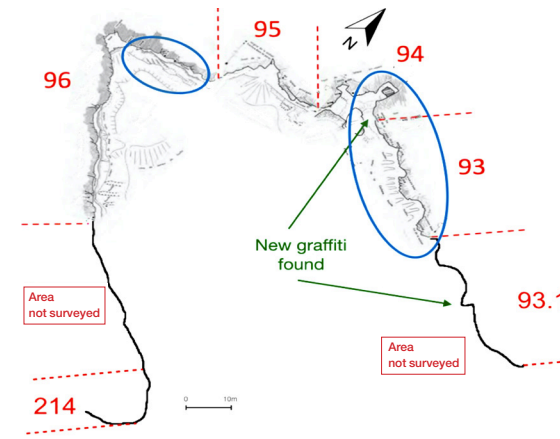


Figure 1. The Royal Cachette Wadi (C2) with sectors defined in *Graffiti de la Montagne Thebaine*. Areas of concentration of graffiti in blue, and new graffiti identified in green. Composite from sectorial maps from GMT and C2 Project.

2017 campaign we focused mainly on the survey of the lower ground of the valley.

First of all, the team identified topographical markers and register numbers left by previous surveyors. This allowed us to delimit the sections defined in GMT and locate the published graffiti (figs. 1 and 2). The markings were mostly clearly written in pencil so they have been resistant to erasure. We identified all the sections in the GMT survey but in the 2017 campaign we were only able to explore the sections numbered 93, 94, 95 and 96 on the lower ground of the valley. Despite the frailty of the stone, already described in one of the earliest reports of the site,⁸ the graffiti are still in place. This indicates that most of the stone is stable and, at least, presents

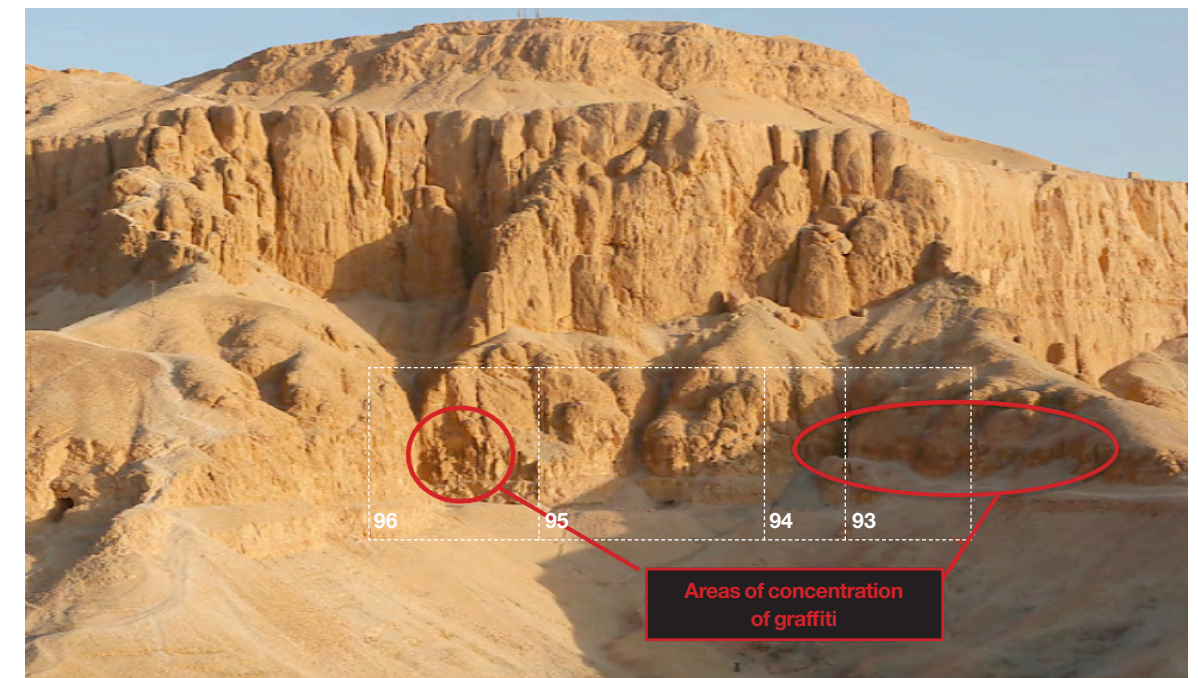


Figure 2. Areas of concentration of graffiti in the lower level of the wadi. Photograph: C2 Project.

⁸ Maspero 1889: 517.

the same facade as that recorded over a century ago. The graffiti are difficult to identify (fig. 3) but the ancient ones are easy to distinguish from modern ones, which are often vandalism. Recent graffiti by tourists or visitors tend to be written with limestone flakes, which have left a broader trace, whereas the ancient graffiti tend to be finer and darker. Presumably in antiquity flint flakes, very common in the area, were used as the writing tool because flint is a much harder material than limestone. The previous surveys in the valley seem to have covered only part of the walls, which present about 320 linear metres in the lower ground. Approximately 202 linear metres had already been surveyed, leaving around 110 linear metres—or about a third of the walls of the lower ground—unsurveyed at the beginning of the present project.

There seemed to be two areas of concentration of graffiti already surveyed in the lower ground (see fig. 2). One group clearly follows the present path from the mouth of the valley to the cache along the east wall. This includes Sections 93 and 94 of the *GMT* and contains a large number of informal inscriptions. Their presence alone casts doubt over the interpretation of TT 320 as a hiding place because the location seems to have been well-known in antiquity and visited often. Unfortunately, because the ancient path to the tomb seems to have been the one still used today by visitors and tourists, modern inscriptions here sometimes damage the ancient graffiti by writing over them. The second concentration is in the south-west corner of the valley, symmetrically opposite but out of sight of tomb TT 320. This concentration includes Sections 95 and 96 of the *GMT* but the *C2 Project* has identified a number of new elements in this area, as discussed below.

Graffiti Group 1

Since the *GMT* was published, new inscriptions have been identified in the valley: notably two graffiti bearing the name of king Nubkheperre Antef V (Seventeenth Dynasty) at the entrance of tomb TT 320 itself;⁹ and a graffiti of the royal scribe and priest Butehamun (fig. 3), to add to several of his identified previously.¹⁰ The former graffiti brings the debate over the date and identity of the owner of TT 320 back to queen Inhapy, a contemporary of Nubkheperre Antef. In 2017, the team found a number of other elements in the vicinity never previously described:

- One unpublished graffiti was discovered in the farthest stretch of the north-east wall, facing west at a distance of forty-eight metres from the origin of Section 93 but well outside this section (fig. 4). This has more formal characteristics than other graffiti found within the valley, taking the form of a round-top stela depicting a royal figure, with a *uraeus* and possibly a diadem, standing in front of a pyramid. There is a further discussion of this graffiti in terms of its relationship to the second concentration of graffiti below.
- A second unpublished graffiti was identified in Section 94, in the north-west corner of the valley at four metres above the present ground—specifically in the recess at the entrance to tomb TT 320. It takes the form of a rectangular double frame within which a human figure can be identified. This graffiti is positioned symmetrically opposite the graffiti of Nubkheperre Antef in relation to the tomb shaft (fig. 5).

As noted above, the belief that TT 320 was used as a hiding place originated in the first moments after the discovery of the royal mummies

⁹ Rzepka 2004.

¹⁰ Niwiński *et alii* 2001.



Figure 3. Graffiti of Butehamun in Sector 96. Photograph: C2 Project.



Figure 4. Graffiti representing a crude stela. Photograph: C2 Project.

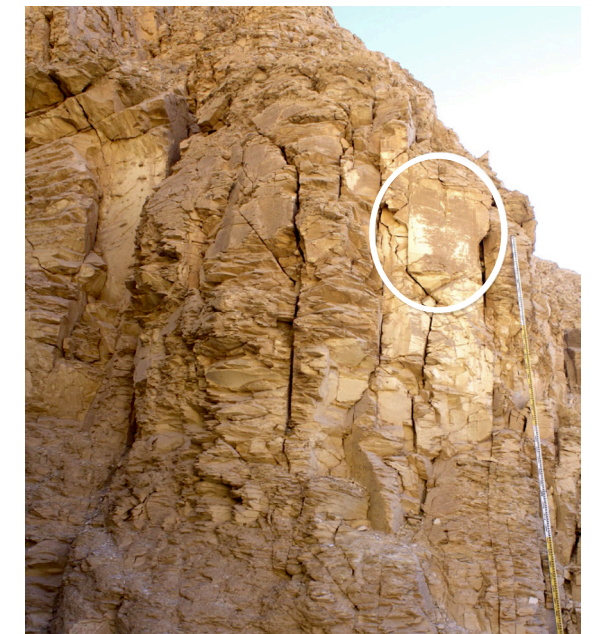


Figure 5. Graffiti identified at the entrance of TT 320. Photograph: C2 Project.



Figure 6. Niche in Section 96. On the lower left side, the libation stone *in situ*. Photograph: C2 Project.

in 1881,¹¹ but this assumption could be reviewed in the light of the observations made by the present project.¹² The valley is not remote at all but central to the Theban necropolis, and surrounded by significant archaeological sites on all sides. Its simple, rectangular shape makes it perfectly

straightforward to visualise the whole valley from its entrance and thus recognise the significant location of TT 320 at the north-east corner, closest to Deir el-Bahari and in a position analogous to the locations of cemeteries in the C1 and C3 Valleys (the Deir el-Bahari and Meketre bays respectively). If we add to this revised interpretation the numerous graffiti along the path from the valley's entrance to the tomb, it seems that the location of TT 320 was well known in antiquity.

Graffiti Group 2

The second concentration of graffiti is in the south-west of the valley and falls within Section 96 (see fig. 1). From here a person writing a graffito cannot see the entrance of TT 320 but several inscriptions of considerable interest may be found here nonetheless, including: a known graffito of Butehamun containing a prayer; graffiti with names deliberately erased; and a figure standing in a gesture characteristic of mourning or worshipping.¹³ Previously, there have been no particular explanations for the presence of these inscriptions in this part of the valley, but the team has now noted that they are immediately adjacent to a rectangular niche in the south-west corner of the valley, symmetrically opposite tomb TT 320 in the north-east corner (see figs. 1 and 6). The floor of the niche has seemingly been smoothed by human action and the corners deliberately squared into the living rock (fig. 7). The measurements of this niche are similar to the measurements of the recess at the entrance of tomb TT 320. Resting on the floor of the niche was a stone showing indications of having been intentionally squared, which has retouched edges and

¹¹ Maspero 1881-1887.

¹² Niwiński *et alii* 2001; Rzepka 2004.

¹³ Sadek and Shimy 1974.



Figure 7. Floor of the niche in Section 96. Photograph: C2 Project.

a central basin with indications of the former presence of liquid. One edge of the basin is lowered as though to allow pouring, and marks have been incised in two of the corners (fig. 8). This seems to be a very basic offering table, albeit of a known type.¹⁴ Therefore, the niche and its environment, including the graffiti, may constitute a shrine or area for worship.

This group of graffiti and the area described in the foregoing are adjacent to a rock formation in the south wall of the valley, facing north. This formation, about twenty metres in height, resembles a human head emerging from the mountain as



Figure 8. Crude libation stone. Photograph: C2 Project.

¹⁴ Hölzl 2002.



Figure 9. Rock formation resembling a human head in the mountain in Section 96. Photograph: C2 Project.

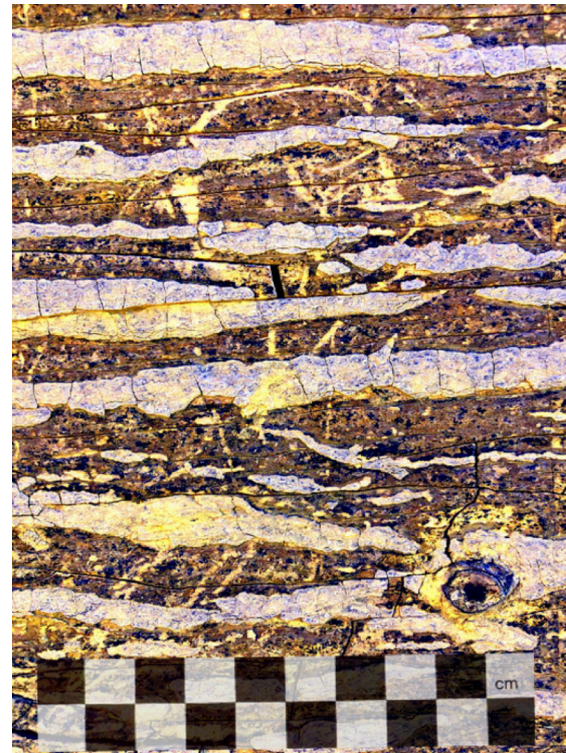


Figure 11. Head in the center of the scene of the graffito. Photograph: C2 Project.



Figure 10. Landscape scene in the graffito. Drawing: C2 Project.

had previously been recognised by Maria Belchi, a team member (fig. 9). Its significant appearance may be represented in the first of the newly registered graffiti in Group 1 (see figs. 4 and 10), which is located directly opposite this rock formation. On the right of the graffito a tomb (TT 320?) is represented by a pyramid; on the left, a prominent pyramidal shape dominates the scene, perhaps to represent the peak of El-Qurn towering over the area; between them is the anthropoid form with a royal head (fig. 11). Therefore, this distribution of elements may be understood to coincide with the distribution of the significant elements in the visible landscape looking from the location of the graffito towards the south-west corner of the valley (fig. 12).

Taking all these elements into consideration—and the continuation of the survey of these

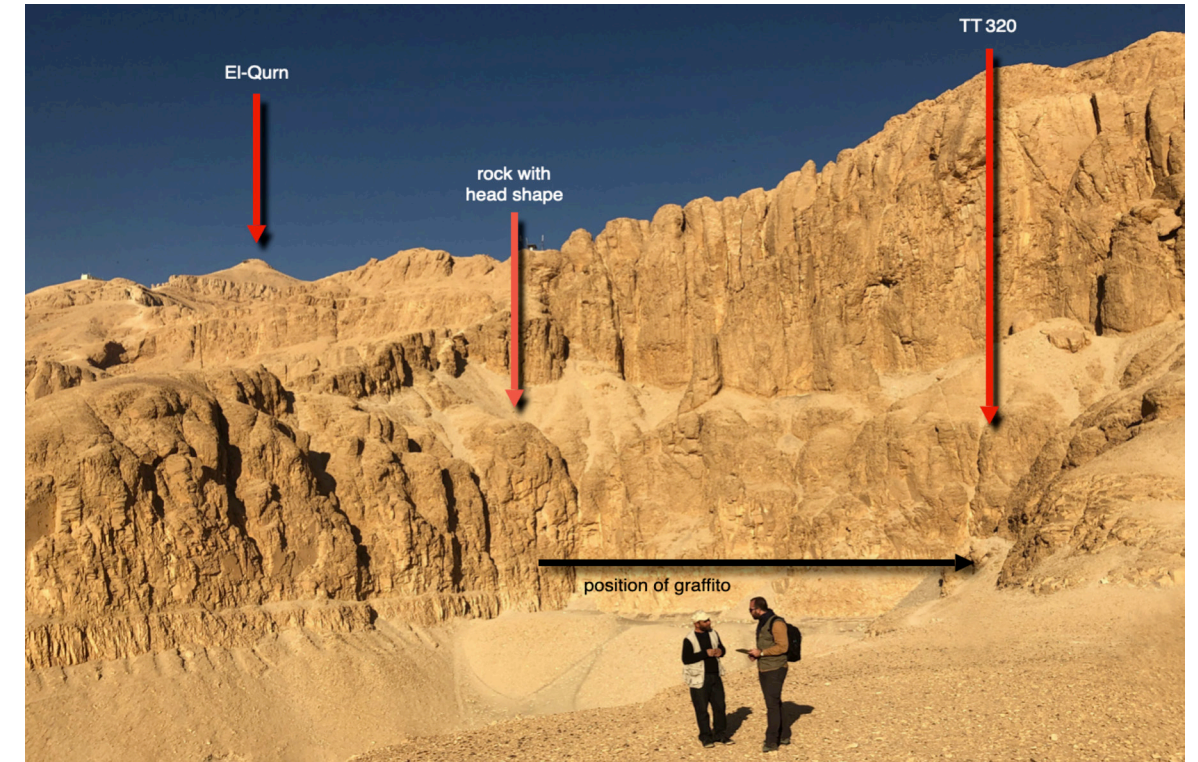


Figure 12. Distribution of significant elements inside the wadi. Photograph: C2 Project.

areas of the valley notwithstanding—we may propose the existence of an area of worship or ritual activity centered on the south-west corner of the C2 Valley, symmetrically opposite the location of tomb TT 320. This area has been defined, essentially, by observation of the walls of the valley, by the second concentration of graffiti considered here, and by the new graffiti in Group 1 that seems to represent the significant elements in this landscape. In short, it seems that the so-called Royal Cache Wadi in ancient times was not a vacant space suited for a hiding place. On the contrary, there are indications of significant human activity, which suggest a different context for using tomb TT 320 as a cache. The ongoing aim of the C2 Project is to study and record such indications in order to explain more fully the role of the wadi within the history of the Theban necropolis.

Acknowledgements

The fieldwork has been sponsored by *Fundación Gaselec*, *Userkaf Patrimonial SLU* and *Egiptología Complutense*. Without their constant support, help and encouragement this project would have never got off the ground. It is to them and to everybody who has contributed in any form to its inception and development that we owe a great debt of gratitude.

Bibliography

ČERNÝ, J.
1956 *Graffiti hiéroglyphiques et hiératiques de la nécropole thébaine: nos 1060 à 1405 (DFIFAO 9)*. Le Caire.

- ČERNÝ, J.; DESROCHES NOBLECOURT, CH.; KURZ, M.
1969-1970 *Graffiti de la Montagne Thébaine I*,1]: cartographie et étude topographique illustré. Le Caire.
- ČERNÝ, J.; COQUE, R.; DEBONO, F.; DESROCHES NOBLECOURT, CH.; KURZ, M.
1971 *Graffiti de la Montagne Thébaine I*,2: la Vallée de l'Ouest. Cartographie, topographie, géomorphologie, préhistoire. Le Caire.
- COQUE, R.; DEBONO, F.; DESROCHES NOBLECOURT, CH.; KURZ, M.; SAÏD, R.
1972 *Graffiti de la Montagne Thébaine I*,3: compléments aux secteurs A et C, frange du Sahara thébain. Cartographie, topographie, géomorphologie, préhistoire. Le Caire.
1973 *Graffiti de la montagne thébaine I*,4: Vallée des Pèlerins d'Espagne (E. 1) et compléments aux secteurs A, B et C. Nouvelles observations à la frange du Sahara thébain. Cartographie, topographie, géomorphologie, préhistoire. Le Caire.
- GRAEFE E.; BELOVA, G. (EDS.)
2010 *The Royal cache TT 320: a re-examination*. Cairo.
- HÖLZL, R.
2002 *Ägyptische Opfertafeln und Kultbecken: eine Form- und Funktionsanalyse für das Alte, Mittlere und Neue Reich (HAeB 45)*. Hildesheim.
- MASPERO, G.
1881-1887 *La trouvaille de Deir-el-Bahari*, 2 vols. Photographs by E. Brugsch. Le Caire.
1889 *Les momies royales de Deir El-Bahari (MMAF I / 4)*. Paris.
- NIWIŃSKI, A.; BUDZANOWSKI, M.; PAWLIKOWSKI, M.; RZEPKA, S.
2001 "Deir el-Bahari: cliff mission, 2000", *Polish Archaeology in the Mediterranean* 12 (reports 2000), 221–235.
- PEDEN, A.J.
2001 *The Graffiti of Pharaonic Egypt: Scope and Roles of Informal Writings (c. 3100-332 B.C.) (PAe 17)*. Leiden, Boston.
- RZEPKA, S.
2004 "Graffiti of Nubkheperre Intef in Deir el-Bahari", *MDAIK* 60: 149–158.
- SADEK, A.F.; SHIMY, M.
1974 *Graffiti de la montagne thébaine III*,6: facsimilés. Le Caire.
- SPIEGELBERG, W.
1921 *Ägyptische und andere Graffiti (Inschriften und Zeichnungen) aus der Thebanischen Nekropolis*. Heidelberg, 2 vols.
- WINLOCK, H.E.
1920 "The Egyptian Expedition 1918-1920: excavations at Thebes 1919-20", *Bulletin of the Metropolitan Museum of Art* 15: 12–32.

Consejo editorial

Director

Miguel Ángel Molinero Polo
Universidad de La Laguna, Tenerife, Islas Canarias

Secretaría de edición

Lucía Díaz-Iglesias Llanos
Centro Superior de Investigaciones Científicas, Madrid

Alba María Villar Gómez
Subdirección General de los Archivos
Estatales (Ministerio de Cultura y Deporte)

Colaborador de edición | English editorial assistant

Kenneth Griffin
Swansea University, Gales, Reino Unido

Consejo de redacción

Antonio Pérez Largacha
Universidad Internacional de la Rioja (UNIR)

José Ramón Pérez-Accino
Universidad Complutense de Madrid

Comité científico

Marcelo Campagno
CONICET | Universidad de Buenos Aires

Josep Cervelló Autuori
Universitat Autònoma de Barcelona

María José López-Grande
Universidad Autónoma de Madrid

Josep Padró i Parcerisa
Universitat de Barcelona

M.^a Carmen Pérez Die
Museo Arqueológico Nacional, Madrid

Esther Pons Mellado
Museo Arqueológico Nacional, Madrid

José Miguel Serrano Delgado
Universidad de Sevilla

Fundadores de la revista

Miguel Ángel Molinero Polo
Antonio Pérez Largacha

José Ramón Pérez-Accino
Covadonga Sevilla Cueva

Trabajos de Egiptología

Papers on Ancient Egypt

Horizonte y perspectiva Trabajos de campo

Editado por | Edited by

Miguel Ángel Molinero Polo | Lucía Díaz-Iglesias Llanos | Alba María Villar Gómez
Daniel Miguel Méndez-Rodríguez | Cruz Fernanz Yagüe | José Ramón Pérez-Accino

Número 10
2019

Índice | Contents

Editorial Miguel Ángel MOLINERO POLO	7
¿Atrapando el solsticio? Un análisis crítico de la orientación de los templos de Deir el-Bahari Juan Antonio BELMONTE, Magdi FEKRI, Miquel SERRA	11
Textos e imágenes sobre textiles de la dinastía XXII de la tumba UE 1018 en Dra Abu el-Naga Francisco L. BORREGO GALLARDO	27
Reflexiones sobre la presencia egipcia en el Levante meridional a finales del período del Bronce Temprano I (ca. 3300-3000 a. C.): a propósito de Tel Erani Marcelo CAMPAGNO	49
Algunas hipótesis sobre el programa decorativo de las paredes en arenisca del Templo de Millones de Años de Tutmosis III Linda CHAPON	63
Seis <i>paddle dolls</i> halladas en una tumba del Reino Medio y su patio en Dra Abu el-Naga Gudelia GARCÍA FERNÁNDEZ	93
Estudio de las reutilizaciones de los espacios funerarios del Egipto antiguo desde una perspectiva del análisis del registro arqueológico David GARCÍA GONZÁLEZ	105
Análisis preliminar de dos momias de la Dinastía XXII halladas en Dra Abu el-Naga y sus amuletos asociados Jesús HERRERÍN, Francisco L. BORREGO GALLARDO	127
El Templo de Millones de Años de Thutmosis III en Luxor: estudio paleopatológico preliminar y nuevas perspectivas Albert ISIDRO	147
Djehutynefer: el redescubrimiento y emplazamiento de su tumba en el urbanismo tebano Ángeles JIMÉNEZ-HIGUERAS	159
Cerámicas cubiertas de barro: datos de algunas vasijas del Segundo Periodo Intermedio/Reino Nuevo halladas en la tumba QH33 de la necrópolis de Qubbet el-Hawa, Asuán María J. LÓPEZ-GRANDE	181
El Edificio B de Tell el-Ghaba como un caso de estudio para repensar la dinámica de la unidad doméstica en el Egipto antiguo Silvia LUPO, Eva A. CALOMINO, Agustina SCARO	201

Trabajos de Egiptología está producida por
Isfet. Egiptología e Historia
con la colaboración del Centro de Estudios Africanos
de la Universidad de La Laguna
y para este número de Egiptología Complutense

C/ Blanco 1, 2º
38400 Puerto de la Cruz
Tenerife - Islas Canarias
España

© De los textos: sus autores y Trabajos de Egiptología

Diseño de arte y maquetación
Amparo Errandonea
aeamparo@gmail.com

Imprime: Gráfica Los Majuelos

Depósito Legal: TF 935-2015
ISSN: 1695-4750

Estudio preliminar sobre la tumba 22, hallada en el noroeste del templo de Millones de Años de Tutmosis III	217
Javier MARTÍNEZ BABÓN	
Elementos arquitectónicos de la capilla funeraria de Sarenput II (QH31) en Qubbet el-Hawa. Caracterización geoquímica	227
Juan Antonio MARTÍNEZ HERMOSO, María José AYORA CAÑADA, Ana DOMÍNGUEZ VIDAL	
Tueris-Oxirrinco. La diosa protectora de Per-Medyed	241
Maite MASCORT ROCA, Esther PONS MELLADO	
Restauración y conservación de un conjunto de estelas de falsa puerta hallado en Heracleópolis Magna (Ehnasya el-Medina, Beni Suef)	257
María Antonia MORENO CIFUENTES	
La explotación de esmeraldas en el Egipto romano. Primeros resultados del <i>Sikait Project</i>	283
Joan OLLER GUZMÁN, David FERNÁNDEZ ABELLA, Vanesa TREVÍN PITA, Oriol ACHÓN CASAS	
<i>C2 Project. The Royal Cache Wadi Survey. 2017 Season</i>	305
José Ramón PÉREZ-ACCINO, Hisham EL-LEITHY	
El templo de Heryshef en Heracleópolis Magna (Ihnasya el-Medina). Trabajos en 2018	315
M. Carmen PÉREZ-DIE, Antonio GÓMEZ LAGUNA	
Análisis técnico de telas con textos y marcas de propietario procedentes de la tumba UE 1018 en Dra Abu el-Naga	335
Pía RODRÍGUEZ FRADE	
Modelado y análisis estructural de la tumba de Khunes (QH34h) en Qubbet el-Hawa. Determinación de las condiciones de estabilidad	359
M. ^a Paz SÁEZ-PÉREZ, Luisa María GARCÍA RUIZ	
Estudio preliminar sobre la necrópolis de la Dinastía XI situada al norte del templo de Millones de Años de Tutmosis III	373
Myriam SECO ÁLVAREZ	
Documentación arqueológica tridimensional de la cultura material en la terraza sureste de la necrópolis de Qubbet el-Hawa (Asuán): potencial y difusión pública de resultados	387
Libertad SERRANO LARA, Luisa María GARCÍA GONZÁLEZ	
Un análisis comparativo de los grafitis en la zona tebana: paisaje, ubicación e intencionalidad en los grafitis figurativos del <i>C2 Project. The Royal Cache Wadi Survey</i>	403
Inmaculada VIVAS SAINZ	
Submission Guidelines	421