

Appendix

Individualized Description of the Contents of each Ceramic Container

The Appendix provides an individual record of each piece of fabric found in the five jars from the mummification deposit of C2.

The text is a brief description of their characteristics, providing information on their manufacture, quality, provenance in relation to the original piece and possible use.

Each piece is typified by stating whether it is a band, a rectangular cloth, a natron bag or an indistinguishable fragment.

The original colour was similar in all cases.

The shade is a result of the amount of resin that impregnated the surface, and, in some cases, dirt and grime. Fabrics without traces of resin have a lighter shade and are usually in a better condition. In some specimens, the fabric is impregnated with resin that was liquid at the time of use and stained the fabric evenly, giving it a medium tone (referred to in this appendix as: impregnation). When the resin was solid at the time of use, more or less sticky accumulations appear, and the fabric has a very dark shade (in this appendix it is referred to as 'accumulations'). The shade of the fabrics varies, and it is difficult to reduce it to predetermined categories. For the sake of clarity, three are used here: light, medium and dark.

In the dimensions, the first figure corresponds to the weft (width) and the second to the warp (length). Where they are followed by a + sign and a third digit, the latter refers to the length of the fringes.

The density is indicated by a first figure corresponding to the number of warp yarns and a second figure corresponding to the number of weft yarns. Where possible, the diameter of the yarns is given.

When present in the piece, manufacturing details such as self band (multiple weft passes), fringes, hems, starting edges, etc., are mentioned.

Finally, specific information is given on the occurrence of resin, as this may indicate its use in connection with mummification processes.

MDC2 I Jar 1

MDC2.1A-1, MDC2.1A-2, MDC2.1A-3

Three bags of natron in poor state of conservation for which a precise documentation is impossible (figs. 52 and 53).



Figure 52. Two natron bags, MDC2. A1-1 and MDC2.A1-2.



Figure 53. Natron bag in poor state of conservation, MDC2.1A-3.

MDC2.1B-4

Rectangular fabric (fig. 54).
Shade: medium.
Dimensions: 36.0 x 13.0 cm.
Thread diameter: 0.08 cm.
Density: 19 x 10 (fig. 55).
Resin: accumulations.



Figure 55. MDC2.1B-4. Density.



Figure 54. Rectangular fabric MDC2.1B-4.

MDC2.1B-5

Two fragments of a single band (fig. 56).
Shade: dark.
Dimensions: 7.0 x 40.0 cm (sum of the two fragments).
Thread diameter: 0.09 cm.
Density: 20 x 12 (fig. 57).



Figure 57. MDC2.1B-5. Density.



Figure 56. Band MDC2.1B-5.

MDC2.1B-6

Band (fig. 58).
Shade: medium.
Dimensions: 7.0 x 17.0 cm.
Thread diameter: 0.09 cm.
Density: 18 x 10 (fig. 59).
Self band: 1/3, 1/3, 1/3 (figs. 60 and 61).
Fringe due to fraying of the fabric.
Resin: small quantity.



Figure 59. MDC2.1B-6. Density.

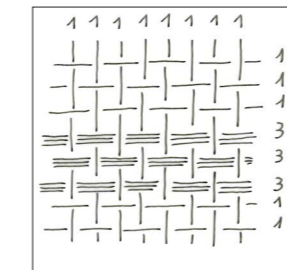


Figure 61. MDC2.1B-6. Graphical representation of self band.



Figure 58. Band MDC2.1B-6.



Figure 60. Band MDC2.1B-6. Self-band 1/3, 1/3, 1/3.

MDC2.1B-7

Band (fig. 62).
Shade: medium.
Dimensions: 6.5 x 30.0 cm.
Thread diameter: 0.09 cm.
Density: 19 x 10 (fig. 63).
Resin: small quantity.



Figure 63. MDC2.1B-7. Density.



Figure 62. Band MDC2.1B-7.

MDC2.1B-8

Band (fig. 64).
Shade: medium.
Dimensions: 7.5 x 16.0 cm.
Thread diameter: 0.08 cm.
Density: 23 x 13 (fig. 65).
Resin: small quantity.



Figure 65. MDC2.1B-8. Density.



Figure 64. Band MDC2.1B-8.

MDC2.1B-9

Band (fig. 66).
Shade: medium.
Dimensions: 8.0 x 24.0 cm.
Thread diameter: 0.08 cm.
Density: 20 x 11 (fig. 67).
Resin: accumulations.

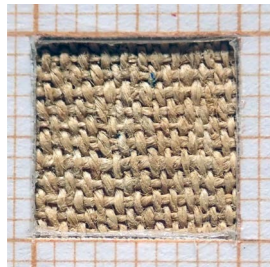


Figure 67. MDC2.1B-9. Density.

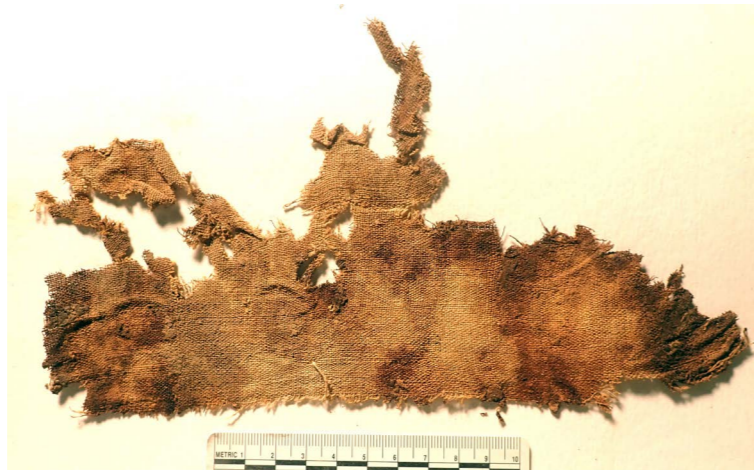


Figure 66. Band MDC2.1B-9.

MDC2.1B-10

Band (fig. 68).
Shade: medium.
Dimensions: 7.0 x 16.0 cm.
Thread diameter: 0.04 - 0.08 cm.
Density: 22 x 11 (fig. 69).
Resin: impregnation.

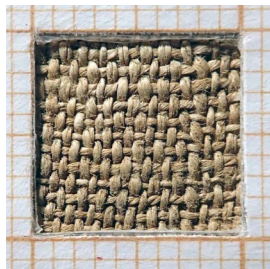


Figure 69. MDC2.1B-10. Density.



Figure 68. Band MDC2.1B-10.

MDC2.1B-11

Band (fig. 70).
Shade: medium.
Dimensions: 8.5 x 17.0 cm.
Thread diameter: 0.05 - 0.09 cm.
Density: 18 x 12 (fig. 71).
Resin: accumulations.



Figure 71. MDC2.1B-11. Density



Figure 70. Band MDC2.1B-11.

MDC2.1B-12

Band (fig. 72).
Shade: medium.
Dimensions: 7.0 x 21.0 cm.
Thread diameter: 0.09 cm.
Density: 19 x 10 (figure 73).
Resin: impregnation.

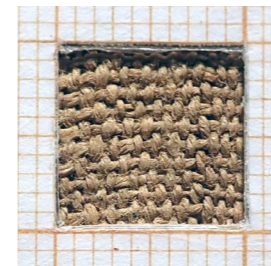


Figure 73. Density MDC2.1B-12.



Figure 72. Band MDC2.1B-12.

MDC2.1B-13

Bands (fig. 74).
Very fragile and difficult to stretch fragments.
Shade: dark.
Resin: accumulation of resin mixed with a lot of soil or natron.



Figure 74. Band MDC2.1B-13.

MDC2.1B-14

Band (fig. 75).
Shade: dark.
Dimensions: 9.0 x 15.0 + 12.0 cm.
Density: 26 x 10 (fig. 76).
Self-band: 1/3, 1/3, 1/3.
Fringe made with four warp threads.
Resin: impregnation.



Figure 76. MDC2.1B-14. Density.



Figure 75. Band MDC2.1B-14.

MDC2.1B-15

Fragment (fig. 77).
Shade: medium.
Dimensions: 10.0 x 12.0 + 10.0 cm.
Yarns of various thicknesses.
Density: 16 x 11 (fig. 78).
Self-band: 1/3, 1/3, 1/3.
Fringes made with four warp threads.
Resin: light impregnation.



Figure 78. MDC2.1B-15. Density.



Figure 77. Band MDC2.1B-15.

MDC2.1B-16

Bands (fig. 79).
Three similar fragments.
Shade: medium dark.
Dimensions: 9.0 x 55.0 cm.
One edge shows a hem.
Resin: impregnation and accumulations.



Figure 79. Band MDC2.1B-16.

MDC2.1B-17

Fragments (fig. 80).
Four fragments in very bad condition,
dark and with a large amount of resin.



Figure 80. Fragments MDC2.1B-17.

MDC2.1B-18

Bag of natron (fig. 81).
Shade: dark.
Dimensions: 4.0 x 18.0 cm.



Figure 81. Natron bag MDC2.1B-18.

MDC2.1B-19, MDC2.1B-20

Bands (fig. 82).
Small, very fragile fragments, with a
large amount of soil and resin.



Figure 82. Fragments MDC2.1B-19 and MDC2.1B-20.

MDC2.1B-21

Bands (fig. 83).
Two band fragments.
Shade: dark.
Dimensions: 7.0 x 30.0 cm and 9.0 x 37.0 cm.
Thread diameter: 0.05–0.08 cm.
Density: 22 x 12 (fig. 84).
Resin: localized accumulations.

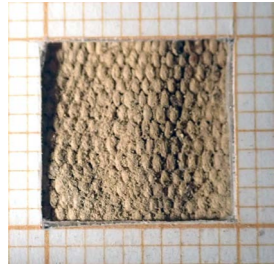


Figure 84. MDC2.1B-21. Density.



Figure 83. Band MDC2.1B-21.

MDC2.1B-22

Bands (fig. 85).
Three very fragile fragments.
Shade: dark.
Dimensions: 7.0 x 13.0 cm, 7.0 x 15.0 cm,
8.0 x 64.0 cm.
Thread diameter: 0.06 cm.
Density: 22 x 14.
Resin: large amount of accumulation of
resins and soils.



Figure 85. Band MDC2.1B-22.

MDC2.1B-23

Four Fragments of band (fig. 86).
Several fragments very difficult to recover
and originally tightly bound to each other.
Shade: Some fragments have light shade
while others are very dark.
Dimensions: 9.0 x 47.0 cm, 7.5 x 44.0 cm,
7.7 x 43 cm, 22.0 x 13.0 cm.
Thread diameter: 0.06 cm.
Density: 22 x 12.
One edge shows a hem.
Resin: resin in localized areas.



Figure 86. Bands MDC2.1B-23.

MDC2.1B-24 to MDC2.1B-32

Package made up of 8 pieces. Some of
them could come from the same fabric
or from the same band (figs. 87 and
88).



Figure 87. MDC2.1B-24 to MDC2.1B-32. Set of bands extracted from a block.



Figure 88. Set of bands MDC2.1B-24 to MDC2.1B-32, stretched and flattened.

MDC2.1B-24

Wide band (fig. 89).
Shade: medium.
Dimensions: 14.0 x 47.0 cm.
Irregular yarns between 0.04 and
0.07 cm.
Density: 18 x 10 (fig. 90).
Resin: accumulations.



Figure 90. MDC2.1B-24. Density.



Figure 89. Wide band MDC2.1B-24.

MDC2.1B-25, MDC2.1B-26

Band (fig. 91).
 Shade: light with dark spots.
 Dimensions: 9.0 x 46.0 and 8.5 x 50.0 cm.
 Thread diameter: 0.07 cm.
 Density: 16 x 11 (fig. 92).
 Self-band: 1/3, 1/3, 1/3.
 Fringe corresponding to the loose threads of the warp.
 Resin: accumulations.
 One edge shows a hem.



Figure 92. MDC2.1B-25. Density.



Figure 91. Band MDC2.1B-25 and 1B-26.

MDC2.1B-27, MDC2.1B-28

Band (fig. 93).
 Shade: dark.
 Dimensions: 8.5 x 46.5 and 8.5 x 74 cm.
 Thread diameter: 0.07 cm.
 Density: 20 x 12.
 Resin: impregnation and accumulations.



Figure 93. Bands MDC2.1B-27 and MDC2.1B-28.

MDC2.1B-29

Band (fig. 94).
 Shade: dark.
 Dimensions: 9.0 x 50.0 cm.
 Thread diameter: 0.07 cm.
 Density: 20 x 12 (fig. 95).
 Resin: accumulations of resin and other products.

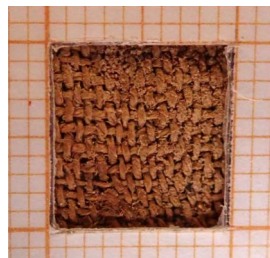


Figure 95. MDC2.1B-29. Density.



Figure 94. Band MDC2.1B-29.

MDC2.1B-30

Band (fig. 96).
 Shade: dark.
 Dimensions: 9.0 x 22.0 + 9.0 cm.
 Thread diameter: 0.06 cm.
 Density: 18 x 12 (fig. 97).
 Self-band: 1/3, 1/3, 1/3 (fig. 98).
 Fringes made with 6 warp threads.
 Resin: accumulations of resin and other products.



Figure 96. Band MDC2.1B-30.

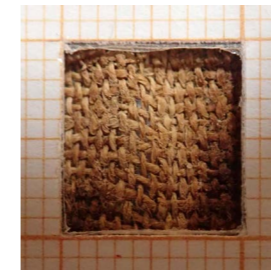


Figure 97. MDC2.1B-30. Density.



Figure 98. MDC2.1B-30. Self-band.

MDC2.1B-31

Band (fig. 99).
 Shade: dark.
 Dimensions: 7.5 x 126.0 cm.
 Thread diameter: 0.05 cm.
 Density: 22 x 12 (fig. 100).
 Resin: very dark accumulations.
 It is the longest band of this jar.

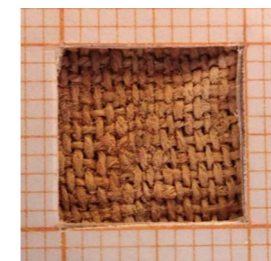


Figure 100. MDC2.1B-31. Density.



Figure 99. Band MDC2.1B-31.

MDC2.1B-32 to MDC2.1B-35

Four small round packets (fig. 101).

Set of four small, rounded balls of fabric impregnated with resins and very hardened. Two of them have a small appendage produced by tying the fabrics and they measure 5 cm, and the other two are small balls measuring around 2 cm.

They could have been used as utensils to apply the products, or they are miniature versions of natron packets.¹

Another interpretation has been proposed for two small natron bags tied with a string found in the mummification deposit of Tutankhamun. They are considered a part of an amulet,² are of a smaller size than the MDC2.1's, measuring 1.5 cm, and they were kept at a distance of 2.0 cm from each other by the string.³



Figure 101. MDC2.1B-32 to MDC2.1B-35. Four small, rounded bundles.

MDC2 | Jar 2**MDC2.2A-1**

Very deteriorated rectangular fragment (fig. 102).

Shade: medium-dark.

Dimensions: 33.0 x 52.0 cm.

Thread diameter: 0.05 cm.

Density: 20 x 15 (fig. 103).

Resin: impregnation.

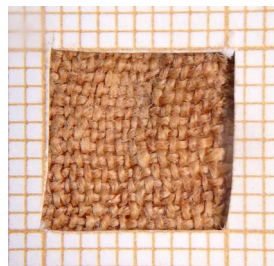


Figure 103. MDC2.2A-1. Density.



Figure 102. Rectangular fabric MDC2.2A-1.

MDC2.2A-2

Rectangular fabric (fig. 104).

Very deteriorated rectangular fragment.

Shade: medium.

Dimensions: 50.0 x 70.0 cm.

Thread diameter: 0.05 cm.

Density: 23 x 11 (fig. 105).

Localized reinforcement stitches (fig. 106).

Resin: small amount.



Figure 104. Rectangular fabric MDC2.2A-2.

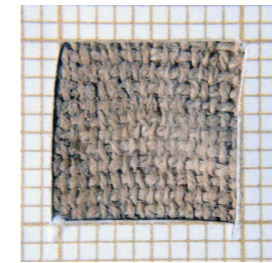


Figure 105. MDC2.2A-2. Density.

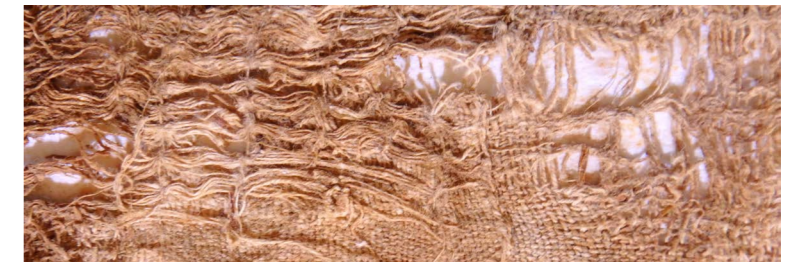


Figure 106. MDC2.2A-2. Reinforcement stitches.

MDC2.2A-3

Band (fig. 107).

Small band widening at one end.

Shade: medium.

Dimensions: 10.0-22.0 x 45.0 cm.

Density: 22 x 12.

Starting border.

Self-band: 1/3, 1/3, 1/3 (fig. 108).

Fringe remnants.

Resin: general impregnation and localized dark accumulations.



Figure 107. Band MDC2.2A-3.



Figure 108. MDC2.2A-3. Self-band.

¹ Brier 1996: 80.

² Winlock 1941.

³ Winlock 2010: 40.

MDC2.2A-4

Bag of natron (fig. 109).
Shade: light.
Dimensions: 17.0 x 23.0 cm.
Thread diameter: between 0.04 and 0.08 cm.
Density: 18 x 12 (fig. 110).
Resin: inexistent.

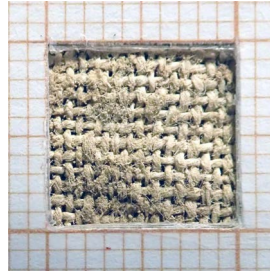


Figure 110. MDC2.2A-4. Density.



Figure 109. Natron bag MDC2.2A-4.

MD2C.2B-5

Bag of natron (fig. 111).
Broken, incomplete and presents an accumulation of black resin stuck to the fabric impossible to soften without risk to the integrity of the fabric. When stretched, the rounded shape characteristic of natron bags can be appreciated. There are remains of the string used to close the bag. The resin shows remains of vegetable fibres stuck to it.
Shade: light with a darker central area.
Dimensions, diameter: 24.0 cm.
Thread diameter: between 0.04 and 0.09 cm.
Density: 22 x 12 (fig. 112).
Resin: accumulation in a corner of the fabric (fig. 113).



Figure 111. Natron bag MDC2.2B-5.

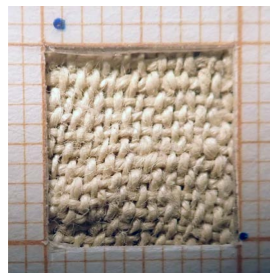


Figure 112. MDC2.2B-5. Density.



Figure 113. Resin accumulation MDC2.2B-5.

MDC2.2B-6

Bag of natron (fig. 114).
Bag broken in its central part. It preserves the closure tied with a rope that gives two turns. This bag has only been cleaned on the outside.
Shade: light.
Dimensions: 11.0 cm.
Thread diameter: 0.08 cm.
Density 16 x 9 (fig. 115).
Resin: inexistent.



Figure 115. MDC2.2B-6. Density.



Figure 114. Natron bag MDC2.2B-6.

MDC2.2B-7

Remains of natron bags (fig. 116).
Appeared along with a ball of natron and an accumulation of resin, very deteriorated and incomplete (fig. 117).
Dimensions: 27.5 x 26.0 and 27.0 x 25.0 cm.
Density: 22 x 10 and 22 x 9 (fig. 118).
Resin: light impregnation.



Figure 118. MDC2.2B-7. Density.



Figure 116. Natron bag MDC2.2B-7.



Figure 117. Natron ball and resin accumulation MDC2.2B-7

MDC2.2B-8

Package (fig. 119).

It has a very little weight, and the fabric is extremely fragile. Even without unravelling it, an area decorated with a band of multiple weft passes can be distinguished (fig. 120). Because of its fragility, it is impossible to work on it to obtain individualized pieces.



Figure 119. Fabric ball MDC2.2B-8.



Figure 120. MDC2.2B-8. Self-band.

MDC2.2B-9

Bag of natron (fig. 121).

Shade: light.

Dimensions: 23.0 x 28.0 cm.

Thread diameter: 0.05 cm.

Density: 18 x 10 (fig. 122).

Resin: light impregnation.

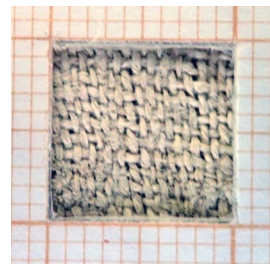


Figure 122. MDC2.2B-9. Density.



Figure 121. Natron bag MDC2.2B-9.

MDC2.2B-10

Bag of natron (fig. 123).

Shade: light.

Dimensions: 18.0 x 16.0 cm.

Thread diameter: 0.05 cm.

Density: 17 x 11.

Resin: light impregnation.



Figure 123. Natron bag MDC2.2B-10.

MDC2.2B-11

Band (fig. 124).

Shade: medium-dark.

Dimensions: 9.0 x 50.0 cm.

Thread diameter: 0.05 cm.

Density: 32 x 12 (fig. 125).

Resin: accumulations.

One edge shows a hem.

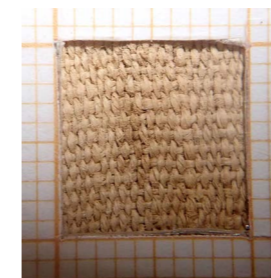


Figure 125. MDC2.2B-11. Density.



Figure 124. Band MDC2.2B-11.

MDC2.2B-12

Band (fig. 126).
 Shade: medium.
 Dimensions: 9.0 x 23.0 cm.
 Thread diameter: 0.08 cm.
 Density: 21 x 10 (fig. 127).
 Resin: light impregnation.

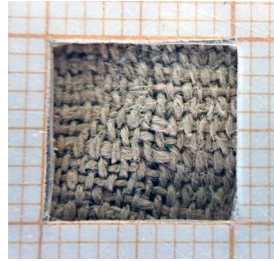


Figure 127. MDC2.2B-12. Density.



Figure 126. Band MDC2.2B-12.

MDC2.2B-13

Bands (fig. 128).
 Set of six bands.
 Shade: medium.
 Dimensions: 5.0 x 12.0 cm, 3.5 x 13.0 cm,
 4.0 x 21.0 cm, 4.0 x 13.0 cm, 4.0 x 36.0
 cm, 4.0 x 32.0 cm..
 Thread diameter: 0.08 cm.
 Density: 32 x 11 (fig. 129).
 Resin: light impregnation.



Figure 129. MDC2.2B-13. Density.



Figure 128. Six fragments of the band MDC2.2B-13.

MDC2.2B-14

Band (fig. 130).
 Shade: medium.
 Dimensions: 9.0 x 17.0 cm.
 Thread diameter: 0.08.

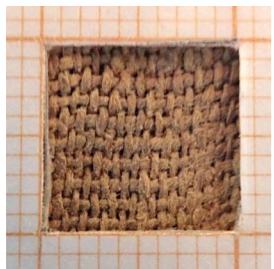


Figure 131. MDC2.2B-14. Density.



Figure 130. Band MDC2.2B-14.

Density: 20 x 9 (fig. 131).
 One edge shows a hem.
 Resin: small amount.

MDC2.2B-15

Fragment of band (fig. 132).
 Shade: medium.
 Dimensions: 10.0 x 13.0 + 7.0 cm.
 Thread diameter: 0.08 cm.
 Density: 22 x 11 (fig. 133).
 Self-band: 1/3, 1/3, 1/1, 1/1, 1/3, 1/3, 1/3
 (figs. 134 and 135).
 Fringes with four or six warp threads.
 Resin: small amount.

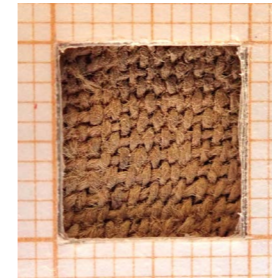


Figure 133. MDC2.2B-15. Density.



Figure 132. Band MDC2.2B-15.

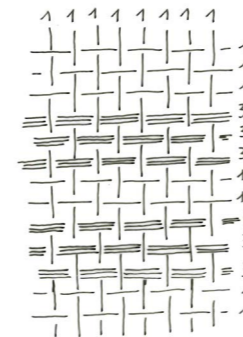


Figure 135. MDC2.2B-15. Realistic representation of self-bands.



Figure 134. MDC2.2B-15. Multiple passes of weft.

MDC2.2B-16 to MDC2.2B-18

Package (fig. 136).

The fabrics are very fragile and with a lot of soil and resin in sticks.



Figure 136. Ball of fabrics MDC2.2B-16, MDC2.2B-17 and MDC2.2B-18.

MDC2.2B-16

Fragments of bands (fig. 137).

Shade: medium.

Dimensions: 8.0 x 45.0 cm, 8.0 x 20.0 cm

Thread diameter: 0.08 cm.

Density: 23 x 10 (fig. 138).

Resin: small amount.

One edge shows a hem.

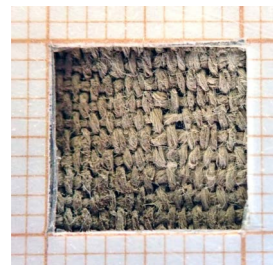


Figure 138. MDC2.2B-16. Density.

MDC2.2B-17

Band (fig. 139).

Shade: medium.

Dimensions: 9.0 x 14.0 cm.

Thread diameter: 0.08 cm.

Density: 32 x 15 (fig. 140).

Resin: small amount.

One edge shows a hem.

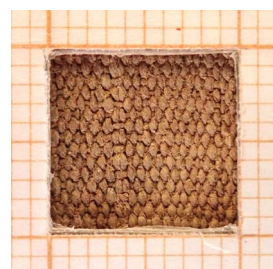


Figure 140. MDC2.2B-17. Density.



Figure 137. Bands MDC2.2B-16.



Figure 139. Band MDC2.2B-17.

MDC2.2B-18

Band (fig. 141).

Shade: medium.

Dimensions: 10.0 x 22.0 cm.

Thread diameter: 0.08 cm.

Density: 26 x 10 (fig. 142).

Resin: impregnation.

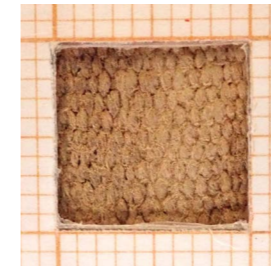


Figure 142. MDC2.2B-18. Density.

MDC2.2B-19 to MDC2.2B-21

Package formed by three fragments with many deposits. They have similar dimensions and characteristics (fig. 143).



Figure 141. Band MDC2.2B-18.

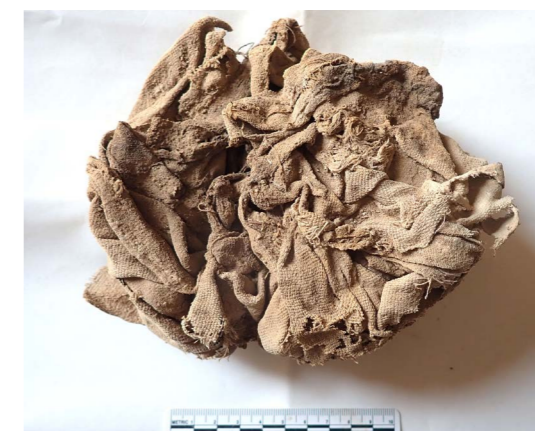


Figure 143. Fabric ball MDC2.2B-19, MDC2.2B-20 and MDC2.2B-21.

MDC2.2B-19

Band (fig. 144).

Shade: dark.

Dimensions: 10.0 x 21.0 + 5.0 cm.

Thread diameter: 0.08 cm.

Density: 28 x 14 (fig. 145).

Self-band: 1/3, 1/3, 1/3 (fig. 146).

Fringes: made with 6 warp threads.

Resin: accumulations.

One edge shows a hem.

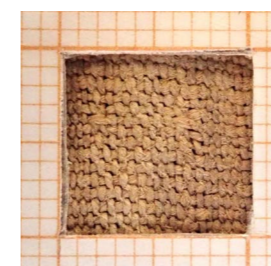


Figure 145. MDC2.2B-19. Density.



Figure 144. Band MDC2.2B-19.



Figure 146. MDC2.2B-19. Self-bands 1/3, 1/3, 1/3, 1/3.

MDC2.2B-20

Band (fig. 147).
Shade: medium.
Dimensions: 10.0 x 33.0 cm.
Thread diameter: 0.08 cm.
Density: 30 x 9 (fig. 148).
Resin: impregnation.

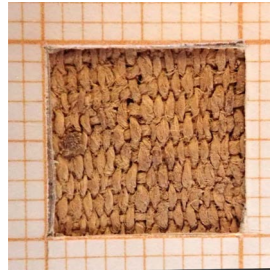


Figure 148. MDC2.2B-20. Density.



Figure 147. Band MDC2.2B-20.

MDC2.2B-21

Band (fig. 149).
Shade: medium-dark.
Dimensions: 9.0 x 35.0 cm.
Thread diameter: 0.08 cm.
Density: 25 x 15 (fig. 150).
Resin: impregnation and accumulation.
One edge shows a hem.

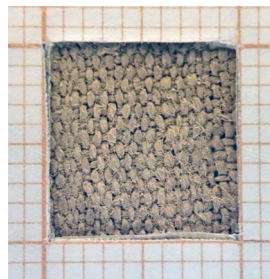


Figure 150. MDC2.2B-21. Density.



Figure 149. Band MDC2.2B-21.

MDC2.2B-22

Small rounded package (fig. 151).
About 35.0 in height x 26.0 in circumference.
It is a very dark and very hard ball tied to form a small peduncle.
It is possible that like those in MDC2 jar 1 it is impregnated with resin for use in product application work.



Figure 151. Small, rounded bundle MDC2.2B-22.

MDC2 | Jar 3**MDC2.3A-1**

Bag of natron (fig. 152).
Keeps a ball of natron in its interior.
Shade: light.
Dimensions: 15.0 x 9.0 cm.
Density: 21 x 11 (fig. 153).
Resin: inexistent.

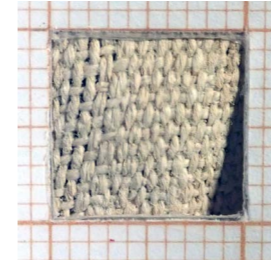


Figure 152. Natron bag MDC2.3A-1.



Figure 153. MDC2.3A-1. Density.

MDC2.3A-2

Bag of natron, very incomplete piece (fig. 154).
Shade: light.
Dimensions: 29.0 x 33.0 cm.
Thread diameter: 0.05 cm.
Density: 20 x 12 (fig. 155).
Resin: light and local impregnation.



Figure 155. MDC2.3A-2. Density.



Figure 154. Natron bag MDC2.3A-2.

MDC2.3A-3

Bag of natron. Very incomplete piece (fig. 156).
Shade: light.
Dimensions: 18.0 x 20.0 cm.
Thread diameter: 0.05 cm.
Density: 17 x 10 (fig. 157).
Resin: light and local impregnation.



Figure 157. MDC2.3A-3. Density.



Figure 156. Natron bag MDC2.3A-3.

MDC2.3A-4

Bag of natron. Very incomplete piece (fig. 158).

Shade: light.

Dimensions: 24.0 x 30.0 cm.

Thread diameter: 0.06 cm.

Density: 20 x 11 (fig. 159).

Faults can be observed in the weave showing instances of two warp threads passed at the same time.

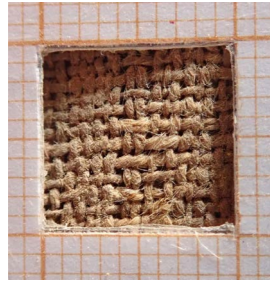


Figure 159. MDC2.3A-4. Density.



Figure 158. Natron bag MDC2.3A-4.

MDC2.3A-5

Band (fig. 160).

Shade: light

Dimensions: 6.0 x 67.0 cm.

Thread diameter: 0.06 cm.

Density: 23 x 14 (fig. 161).

Resin: light and local impregnation.

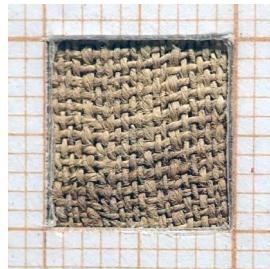


Figure 161. MDC2.3A-5. Density.



Figure 160. Band MDC2.3A-5.

MDC2.3A-6

Band (fig. 162).

Shade: light.

Dimensions: 8.5 x 35.0 cm.

Thread diameter: 0.08 cm.

Density: 21 x 12 (fig. 163).

Resin: light and local impregnation.



Figure 163. MDC2.3A-6. Density.



Figure 162. Band MDC2.3A-6.

MDC2.3A-7

Band (fig. 164).

Badly deteriorated band.

Shade: light.

Dimensions: 9.0 x 52.0 cm.

Thread diameter: 0.08 cm.

Density: 19 x 11 (fig. 165).

Resin: inexistent.

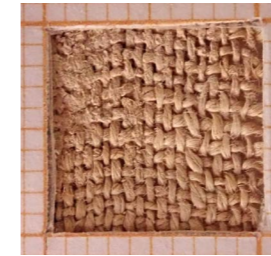


Figure 165. MDC2.3A-7. Density.



Figure 164. Band MDC2.3A-7.

MDC2.3B-8

Band (fig. 166).

Shade: dark.

Dimensions: 7.7 x 47.0 cm.

Thread diameter: 0.08 cm.

Density: 12 x 9.

Resin: impregnation and accumulation.



Figure 166. Band MDC2.B-8.

MDC2.3B-9

Band (fig. 167).

Shade: dark.

Dimensions: 8.0 x 40.0 cm.

Thread diameter: 0.08 cm.

Density: 21 x 12 (fig. 168).

Resin: accumulations.

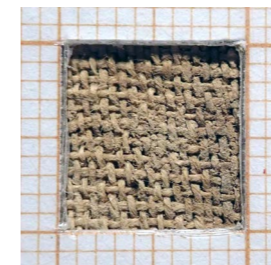


Figure 168. MDC2.3B-9. Density.



Figure 167. Band MDC2.3B-9.

MDC2.3B-10

Band (fig. 169).
Shade: medium.
Dimensions: 7.0 x 33.0 cm.
Thread diameter: 0.08 cm.
Density: 21 x 12 (fig. 170).
Resin: accumulations.
One edge shows a hem.



Figure 170. MDC2.3B-10. Density.



Figure 169. Band MDC2.3B-10.

MDC2.3B-11

Band (fig. 171).
Shade: dark.
Dimensions: 7.0 x 27.0 cm.
Thread diameter: 0.08 cm.
Density: 32 x 12.
Resin: impregnation.
One edge shows a hem.



Figure 171. Band MDC2.3B-11.

MDC2.3B-12

Band (fig. 172).
Shade: medium-dark.
Dimensions: 8.0 x 26.0 cm.
Thread diameter: 0.08 cm.
Density: 21 x 12 (fig. 173).
Resin: impregnation and accumulations.
One edge shows a hem.

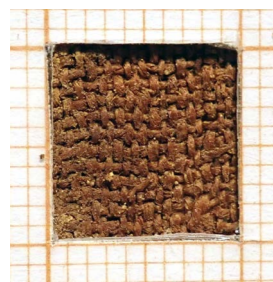


Figure 173. MDC2.3B-12. Density.



Figure 172. Band MDC2.3B-12.

MDC2.3B-13

Band (fig. 174).
Shade: medium-dark.
Dimensions: 6.6 x 37.0 cm.
Thread diameter: 0.08 cm.
Density: 24 x 14 (fig. 175).
Resin: accumulations.

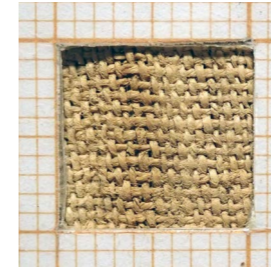


Figure 175. MDC2.3B-13. Density.



Figure 174. Band MDC2.3B-13.

MDC2.3B-14

Block (fig. 176).
Impossible to recover pieces due to the high content of very hardened resin.



Figure 176. Block MDC2.3B-14.

MDC2 | Jar 4**MDC2.4A-1**

Band (fig. 177).
Two fragments of similar features that could be part of a single piece.
Shade: light.
Dimensions: 6.5 x 31.0 cm, 6.5 x 36.5 cm.
Thread diameter: between 0.03 and 0.05 cm.
Density: 17 x 11.
Resin: small amount.



Figure 177. Bands MDC2.4A-1.

MDC2.4A-2

Band (fig. 178).
Fairly stiff fragments with a tendency to fragment. Lot of soil and a little resin.
Shade: light.
Dimensions: 9.0 x 25.0 cm, 7.0 x 32.0 cm.
Thread diameter: 0.05 cm.
Density: 20 x 10.
One edge shows a hem.
Resin: small amount.



Figure 178. Bands MDC2.4A-2.

MDC2.4A-3

Fragment of wide band (fig. 179).
Shade: medium.
Dimensions: 9.0 x 20.0 cm.
Thread diameter: 0.07 cm.
Density: 20 x 13 (fig. 180).
Resin: small amount.

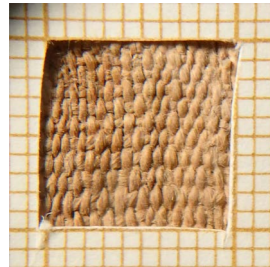


Figure 180. MDC2.4A-3. Density.



Figure 179. Bands MDC2.4A-3.

MDC2.4A-4

Band (fig. 181).
Shade: medium.
Dimensions: 8.0 x 4.06 cm.
Thread diameter: 0.07 cm.
Density: 24 x 10.
Resin: small amount.
One edge shows a hem (fig. 182).

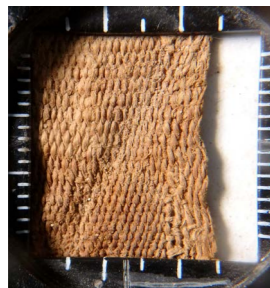


Figure 182. MDC2.4A-4. Selvage.



Figure 181. Band MDC2.4A-4.

MDC2.4A-5

Band (fig. 183).
This fragment of band has the particularity of having a starting edge at one end, an area that corresponds to the assembly of the warp on the loom and is where the realization of a piece of fabric begins.
Shade: medium.
Dimensions: 9.5 x 68.0 cm.
Thread diameter: between 0.05 and 0.1 cm.
Density: 25 x 9 (fig. 184).
Starting border (fig. 185).
Resin: light impregnation.



Figure 183. Band MDC2.4A-5.

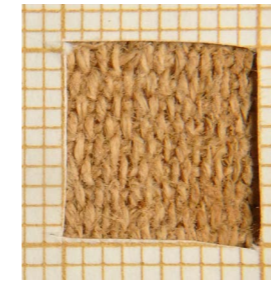


Figure 184. MDC2.4A-5. Density.



Figure 185. MDC2.4A-5. Starting border.

MDC2.4A-6

Band (fig. 186).
Shade: medium.
Dimensions: 10.0 x 50.0 cm.
Thread diameter: 0.06 cm.
Density: 20 x 12 (fig. 187).
Resin: light impregnation.

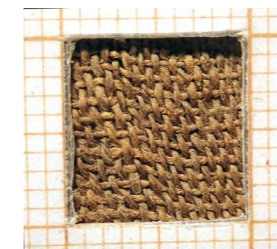


Figure 187. MDC2.4A-6. Density.



Figure 186. Band MDC2.4A-6.

MDC2.4A-7

Band (fig. 188).
 Dimensions: 7.5 x 40.0 cm.
 Thread diameter: 0.06 cm.
 Density: 22 x 12 (fig. 189).
 Resin: light impregnation.

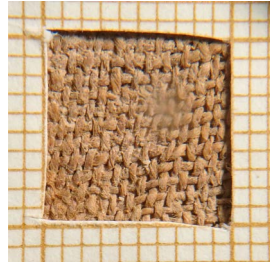


Figure 189. MDC2.4A-7. Density.



Figure 188. Band MDC2.4A-7.

MDC2.4B-8

Band (fig. 190).
 Shade: medium.
 Dimensions: 7.5 x 42.0 cm.
 Thread diameter: 0.08 cm.
 Density: 19 x 11 (fig. 191).
 Resin: light impregnation.

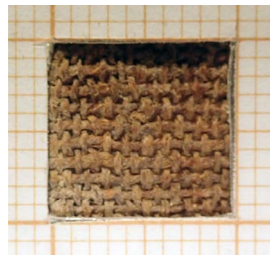


Figure 191. MDC2.4B-8. Density.



Figure 190. Band MDC2.4B-8.

MDC2.4B-9 to MDC2.4B-11

Bands (fig. 192).
 Three bands found knotted at one end.
 It has been possible to separate them,
 thus facilitating their documentation
 (fig. 193).
 Dimensions: 8.0 x 73 cm, 8.0 x 74 cm,
 8.0 x 97 cm.



Figure 193. Bands MDC2.4B-9, MDC2.4B-10 and MDC2.4B-11.

Figure 192. Unpacked set of bands MDC2.4B-9, MDC2.4B-10 and MDC2.4B-11.

MDC2.4B-12

Band (fig. 194).
 They seem to be of the same type and
 could be fragments of the same band.
 Shade: medium.
 Dimensions: 10.0 x 50.0 cm; 10.0 x
 80.0 cm; 10.0 x 77.0 cm. If they come
 from a single band it would have mea-
 sured at least 207.0 cm.
 Thread diameter: 0.07 cm.
 Density: 24 x 8.
 Resin: accumulations.



Figure 194. Bands MDC2.4B-12.

MDC2.4B-13

Band (fig. 195).
 Shade: light.
 Dimensions: 8.0 x 126.0 cm.
 Thread diameter: 0.07 cm.
 Density: 20 x 11 (fig. 196).
 Resin: localized accumulations.



Figure 196. MDC2.4B-13. Density.



Figure 195. Band MDC2.4B-13.

MDC2.4B-14

Band (fig. 197).
 Shade: medium.
 Dimensions: 4.0 x 53.0 cm.
 Thread diameter: 0.06 cm.
 Density: 19 x 11 (fig. 198).
 Resin: localized impregnation.

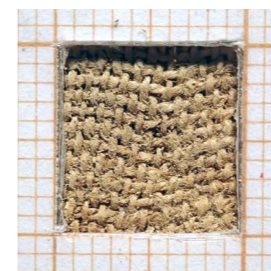


Figure 198. MDC2.4B-14. Density.



Figure 197. Band MDC2.4B-14.

MDC2.4B-15

Rectangular fragment (fig. 199).
Shade: light.
Dimensions: 20.0 x 39.0 cm.
Density: 22 x 16 (fig. 200).

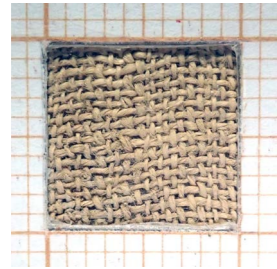


Figure 200. MDC2.4B-15. Density.



Figure 199. Rectangular piece MDC2.4B-15.

MDC2.4B-16

Rectangular piece (fig. 201).
Very incomplete piece.
Shade: medium.
Dimensions: 32.0 x 56.0 cm.
Density: 18 x 10 (fig. 202).
Resin: impregnation.



Figure 202. MDC2.4B-16. Density.



Figure 201. Rectangular piece MDC2.4B-16.

MDC2.4B-17

Bag of natron (fig. 203) pierced and unstuffed.
Dimensions: 17 x 9 cm.



Figure 203. Natron bag MDC2.4B-17.

MDC2 | Jar 5**MDC2.5-1**

Band (fig. 204).
Shade: light.
Dimensions: 9.0 x 36.0 cm.
Thread diameter: 0.08 cm.
Density: 34 x 17 (fig. 205).
Resin: light impregnation.
One edge shows a hem.

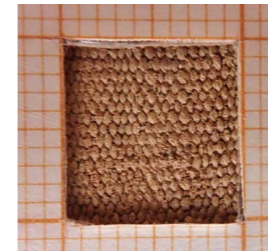


Figure 205. MDC2.5-1. Density.



Figure 204. Band MDC2.5-1.

MDC2.5-2

Band (fig. 206).
Shade: light.
Dimensions: 9.0 x 26.0 cm.
Thread diameter: 0.08 cm.
Density: 33 x 14 (fig. 207).
Resin: inexistent.
One edge shows a hem.

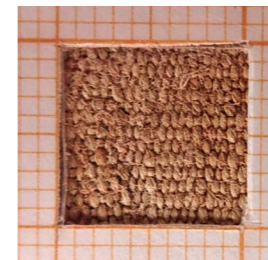


Figure 207. MDC2.5-2. Density.



Figure 206. Band MDC2.5-2.

MDC2.5-3

Band (fig. 208).
Shade: light.
Dimensions: 9.5 x 16.0 cm.
Thread diameter: 0.08 cm.
Density: 20 x 11 (fig. 209).
Resin: light impregnation.
One edge shows a hem.

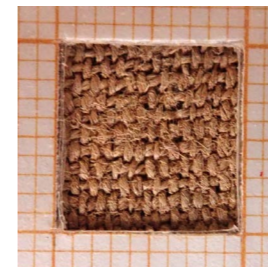


Figure 209. MDC2.5-3. Density.



Figure 208. Band MDC2.5-3.

MDC2.5-4

Band (fig. 210).
 Shade: light.
 Dimensions: 9.5 x 25.0 cm.
 Thread diameter: 0.08 mm.
 Density: 20 x 12.
 Resin: inexistent.
 One edge shows a hem.



Figure 210. Band MDC2.5-4.

MDC2.5-5

Band (fig. 211).
 Shade: light.
 Dimensions: 9.5 x 21.0 cm + 7.0 cm.
 Thread diameter: 0.08 cm.
 Density: 20 x 12 (fig. 212).
 Self-band: 1/3, 1/3, 1/3.
 Fringes made from 6 warp threads.
 Resin: inexistent.
 One edge shows a hem.



Figure 211. Band MDC2.5-5.

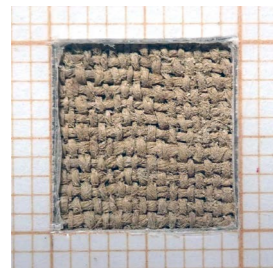


Figure 212. MDC2.5-5. Density.

MDC2.5-6

Band (fig. 213).
 Shade: light.
 Dimensions: 6.5 x 16.0 cm.
 Thread diameter: 0.08 cm.
 Density: 30 x 11 (fig. 214).
 Resin: inexistent.
 One edge shows a hem.



Figure 213. Band MDC2.5-6.

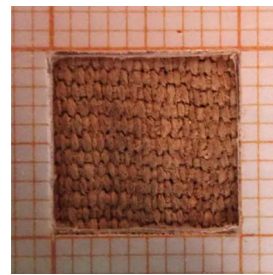


Figure 214. MDC2.5-6. Density.

MDC2.5-7

Band (fig. 215).
 Shade: light.
 Dimensions: 8.0 x 17.0 cm.
 Thread diameter: 0.08 cm.
 Density: 20 x 12 (fig. 216).
 Resin: inexistent.
 One edge shows a hem.



Figure 215. Band MDC2.5-7.

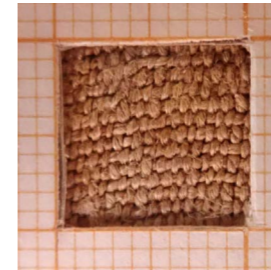


Figure 216. MDC2.5-7. Density.

MDC2.5-8

Band (fig. 217).
 Shade: light.
 Dimensions: 8.0 x 57.0 cm.
 Thread diameter: 0.08 cm.
 Density: 24 x 10 (fig. 218).
 Resin: inexistent.
 One edge shows a hem.



Figure 217. Band MDC2.5-8.



Figure 218. MDC2.5-8. Density.

MDC2.5-9

Band (fig. 219).
 Shade: light.
 Dimensions: 7.0 x 45.0 cm.
 Thread diameter: 0.08 cm.
 Density: 20 x 11 (fig. 220).
 Resin: inexistent.



Figure 219. Band MDC2.5-9.

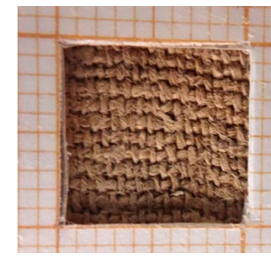


Figure 220. MDC2.5-9. Density.

MDC2.5-10

Band (fig. 221).
Shade: light.
Dimensions: 6.0 x 13.0 cm.
Thread diameter: 0.08 cm.
Density: 18 x 11 (fig. 222).
Resin: inexistent.

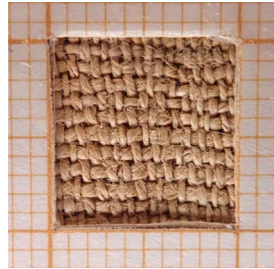


Figure 222. MDC2.5-10. Density.



Figure 221. Band MDC2.5-10.

MDC2.5-11

Band (fig. 223).
Shade: light.
Dimensions: 7.0 x 12.0 cm.
Thread diameter: 0.08 cm.
Density: 40 x 10 (fig. 224).
Resin: inexistent.
One edge shows a hem.

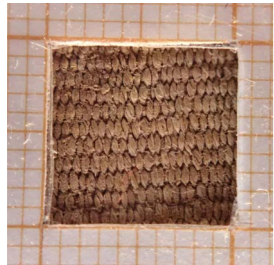


Figure 224. MDC2.5-11. Density.



Figure 223. Band MDC2.5-11.

MDC2.5-12

Band (fig. 225).
Shade: light.
Dimensions: 7.0 x 43.0 cm.
Thread diameter: 0.07 cm.
Density: 34 x 15 (fig. 226).
Resin: light impregnation.
One edge shows a hem.



Figure 226. MDC2.5-12. Density.



Figure 225. Band MDC2.5-12.

MDC2.5-13

Band (fig. 227).
Shade: light.
Dimensions: 6.0 x 110.0 cm.
Thread diameter: 0.08 cm.
Density: 23 x 14.
Resin: light impregnation.
One edge shows a hem.



Figure 227. Band MDC2.5-13.

MDC2.5-14

Band (fig. 228).
Shade: light.
Dimensions: 6.0 x 56.0 cm.
Thread diameter: 0.08 cm.
Density: 26 x 11 (fig. 229).
Resin: light impregnation.
One edge shows a hem.

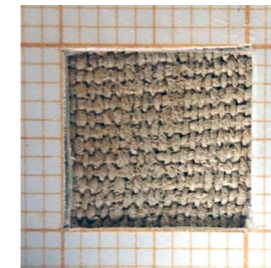


Figure 229. MDC2.5-14. Density.



Figure 228. Band MDC2.5-14.

MDC2.5-15

Bag of natron (fig. 230).
Shade: light.
Dimensions: 9.0 x 13.0 cm.
Resin: impregnation.



Figure 230. Natron bag MDC2.5-15.